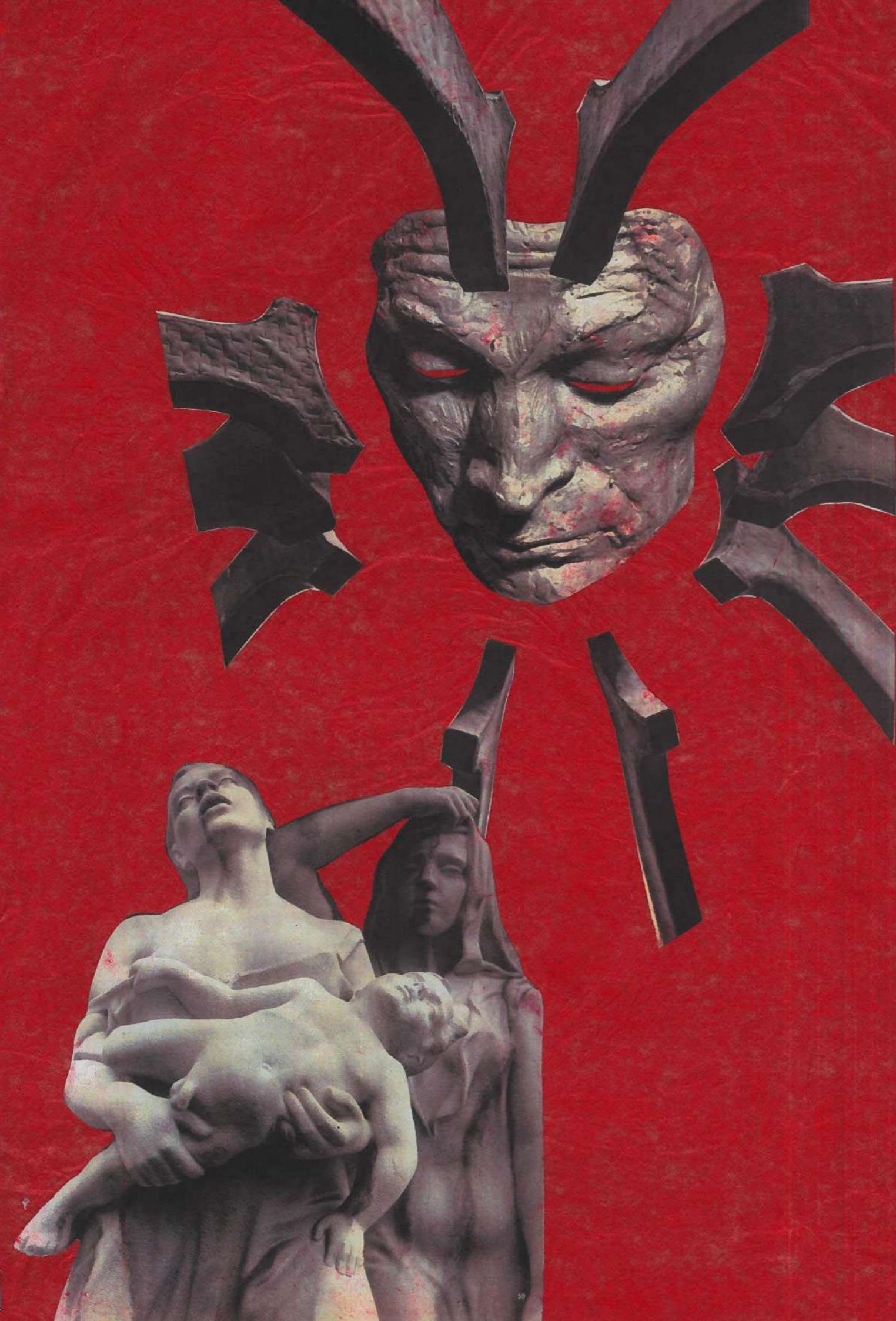




HOLY BLOOD

POLINA KUZYAKINA
FINAL COLLECTION
BA 3RD YEAR
2023 - 2024

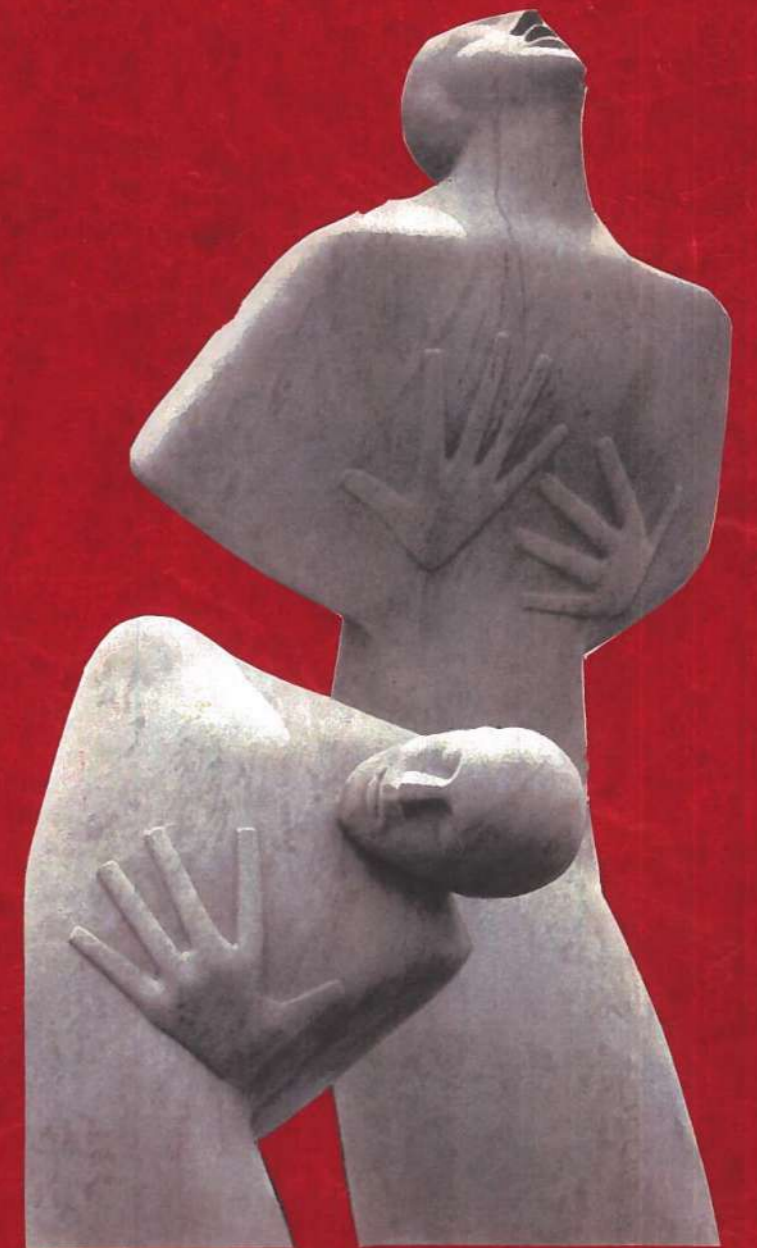
polina.kuz.contact@gmail.com
673709345
IG - @polina.kuzyakina21



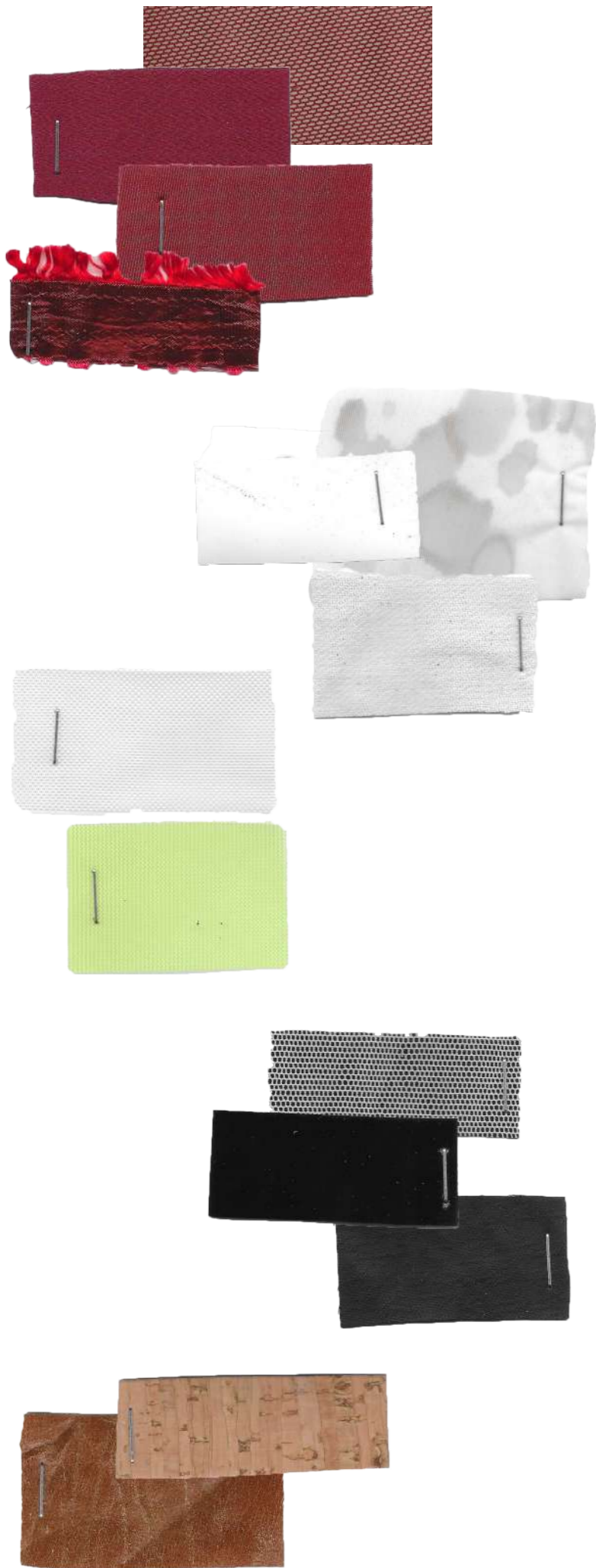
Valerie is a girl I once knew.
She was bright and kind,
Careless, at times blind too.

I knew her,
Way before i knew myself.
But one day, there was,
No more Valerie.
One day,
It was just me.

I wish, she knew,
Just as much,
She meant to me.







PANTONE
11-4001 TPG
Brilliant White
Foli Paper TPG
#RGB 239 240 241
HEX EEECF1

PANTONE
3596 C
Formula Guide Solid Coated
#RGB 229 186 134
HEX D3C28E

PANTONE
7414 U
Formula Guide Solid Uncoated
#RGB 192 127 83
HEX C07F55

PANTONE
Black C
Power Rangers
#RGB 45 41 38
HEX 2D2926

PANTONE
19-1557 TCX
Chili Pepper
Pantone Color of the Year
#RGB 155 27 48
HEX 9B1330

PANTONE
19-1664 TCX
True Red
Pantone Color of the Year
#RGB 191 25 50
HEX DF1932

PANTONE
13-0240 TSX
Tomatillo
Foli Polyester TSX
#RGB 191 223 142
HEX BFD98E

This collection revolves around the different stages of a woman's life. The grief, suffering, mental and physical toll that our society conveys on women. All the ancient beliefs and doings from religion and social views on a woman's body and sexuality, their value, respect and honour, and how all these beliefs are still internalised and very present in our modern lives.

Originating from the Czech novel and movie from the 1970's "Valerie and her week of wonders", which explains a story of a young girl getting her first menstrual cycle. The world around her changes, horror and fantasy take control. Religion, fate and views on the female body and different archetypes of a woman are shown in contrast of each other. Also inspired by the brutalist Yugoslavian WWII Spomeniks, the pale plaster sculptures, the sorrow and pain represented in the brutalist constructions, frozen in time art pieces about our existence and suffering. The white plaster pieces used in the collection moulding certain areas of our body open the door to discuss the topic of sexuality and our bodies.

Women's bodies have always been the epicentre of their existence. Are we anything more than our physical form, were we ever more? In this collection you will see a play around our human form, focusing on specific life stages and body parts crucial to our existence, through the reshaping of corsetry, lingerie and religious/traditional garments, creating exaggerations and abnormalities to the bodies. Experimenting with sexuality through materials like see-through and flowy fabrics, restrictions and functionality also take a role in these garments, as a symbol of the human evolution and adaptation. Elongated silhouettes and long trails that give us depth and weight. Contrast between what's right and wrong, how things should or should not be, represented through rough and gentle fabrics, textures and colours. Reds reign the scene, in retrospect to the taboo topics like our blood, investigated through prints and fabric selection.





leave an opening
 ↓
 top stays all sides
 ↓
 fake top stitch last side (0.8)
 ↓
 close last side (1cm)



In order to keep boobs in shape it needs to be stuffed



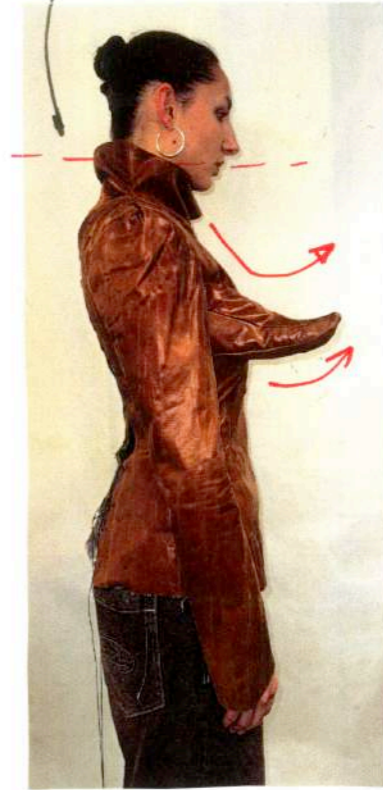
Right before the notches, leaving space for the actual boobs.



cutting at circular pieces & stitching them to the edges of the seam allowance, to keep the stuffing inside.



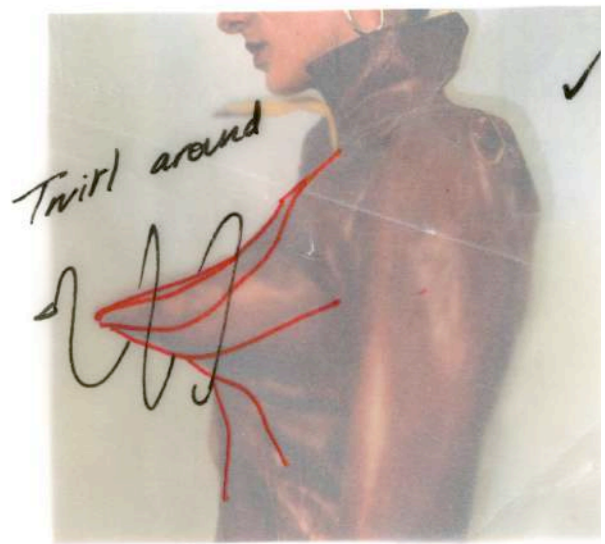
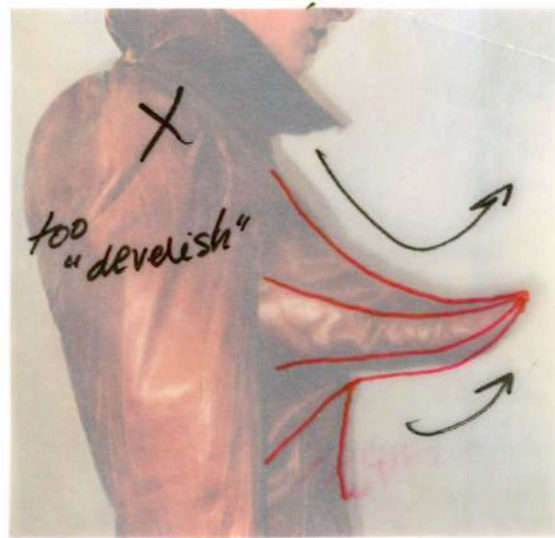
fix back volume
 add 2cm to the back of the jacket.

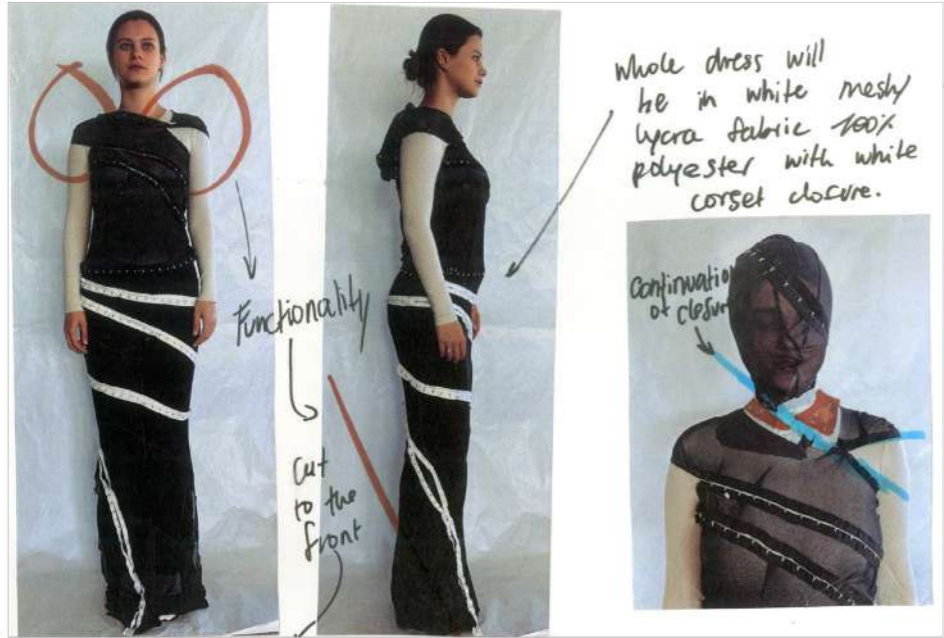


lowering collar length & moving neck seam up 2cm.



Defining what kind of volume will be used for breasts.
 (Breasts need to be moved more to the c)





Whole dress will be in white meshy lycra fabric 100% polyester with white corset closure.



elongate tail with second layer



Break corset closure in two, let it hang?

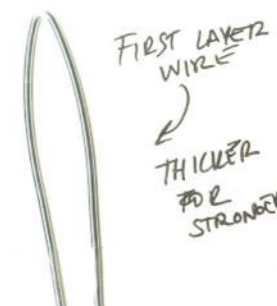
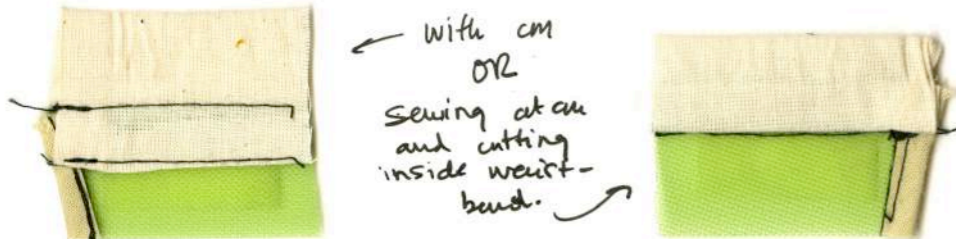
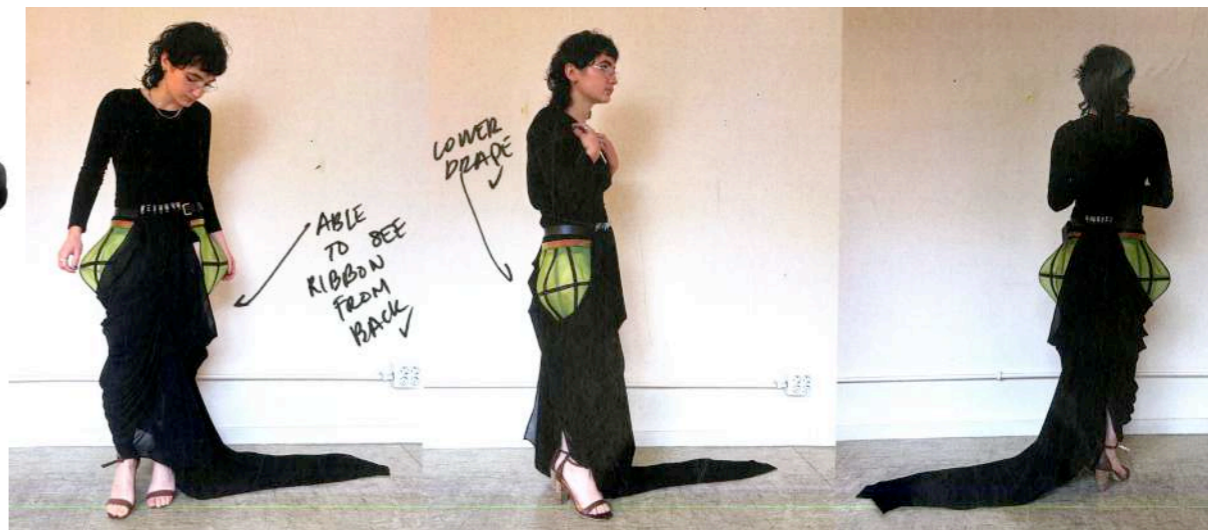
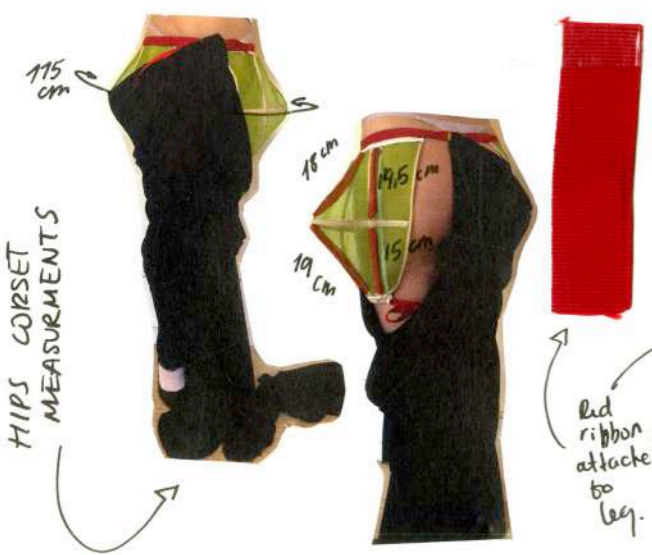
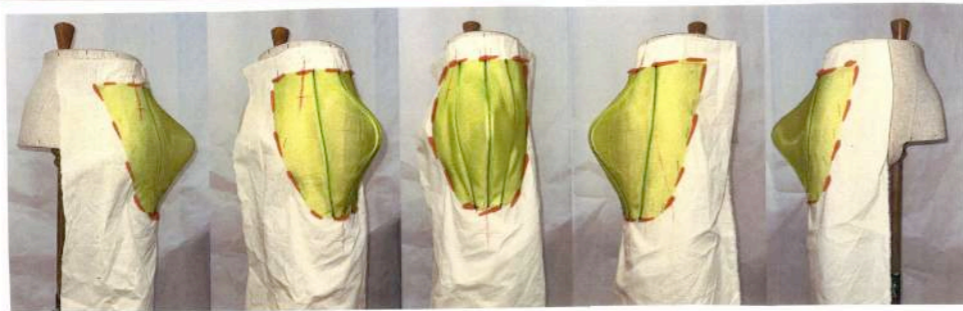
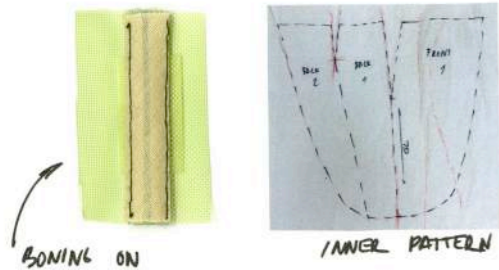
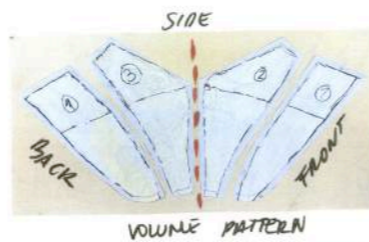
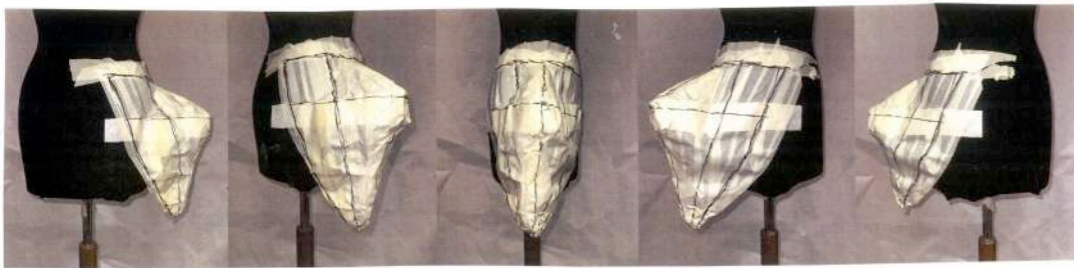


CREATING DRAPING SECOND LAYER



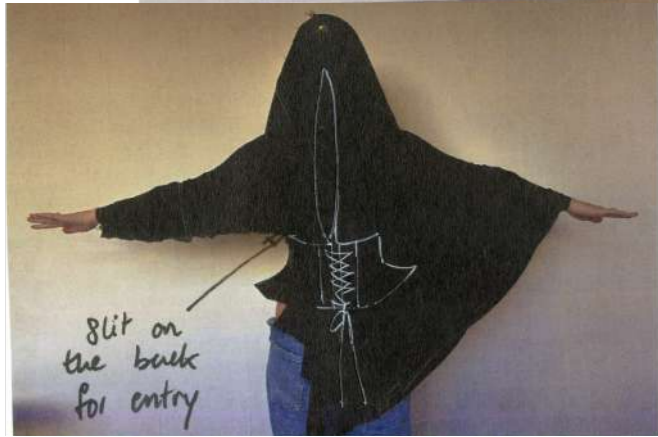
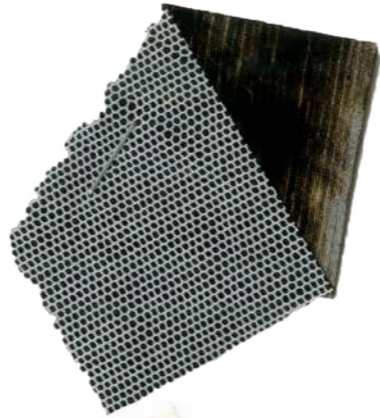
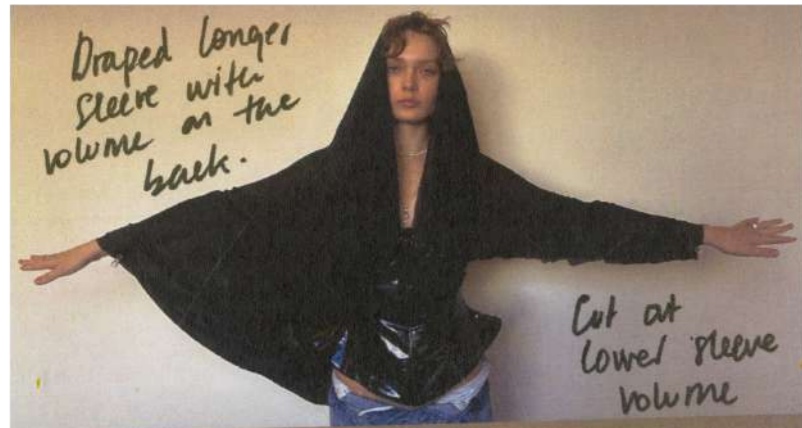
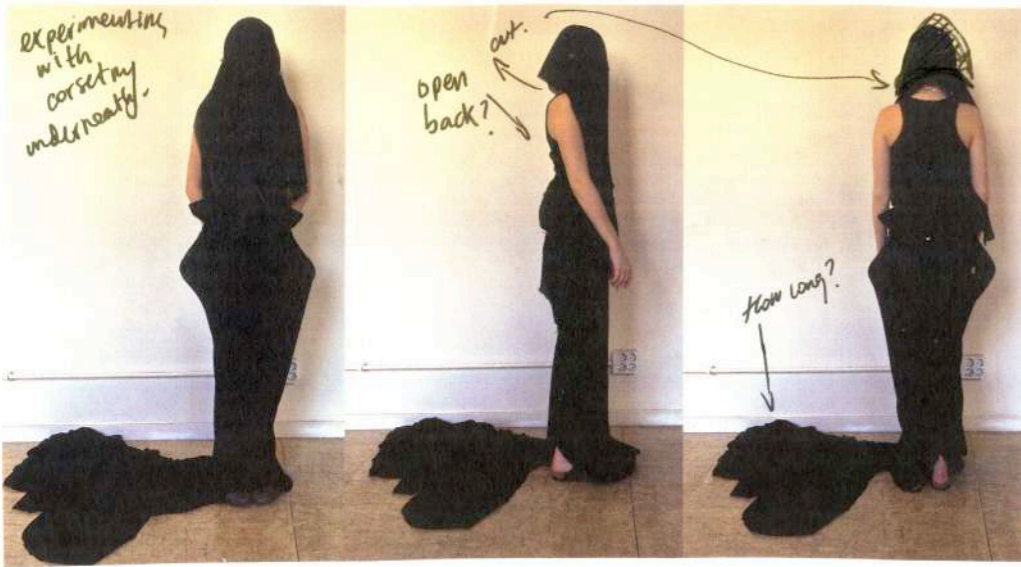
Shorten front





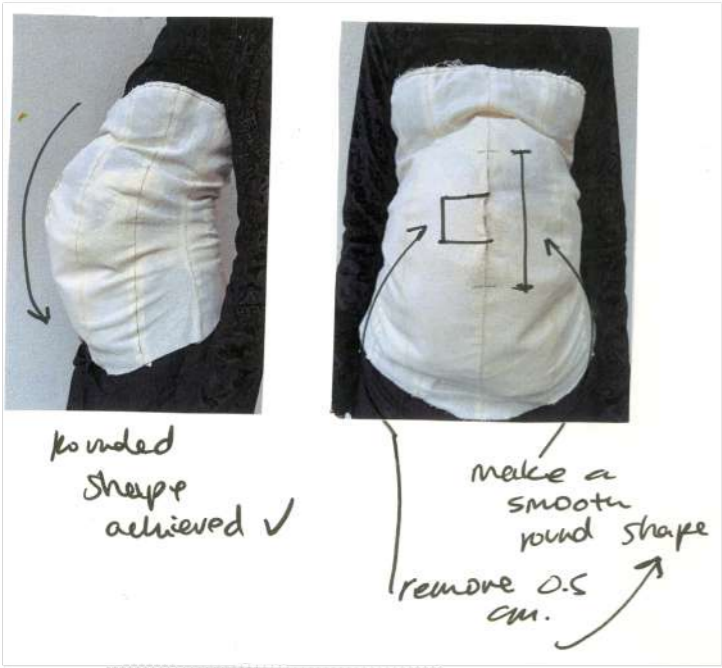
SECOND LAYER WIRE WRAPPED AROUND THE FIRST + WRAPPING AROUND THE FINGERS ATTACHED TO CROWN.





creating a head piece, veil covering face?





rounded shape achieved ✓

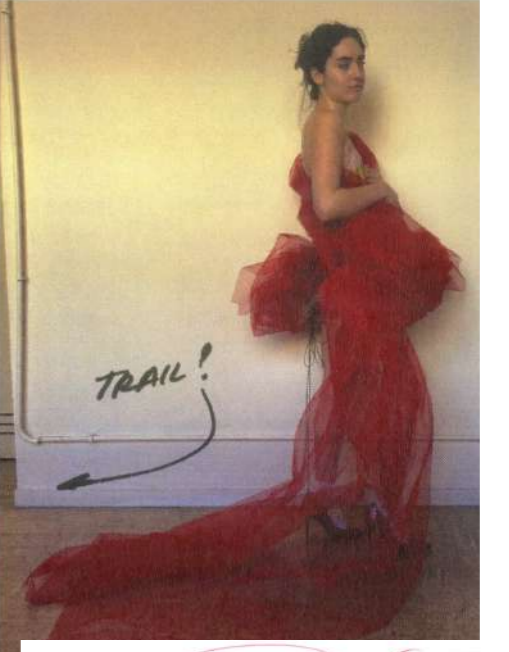
make a smooth round shape
remove 0.5 cm.



change color to beige

keep shoulder volume?

pieces falling down?

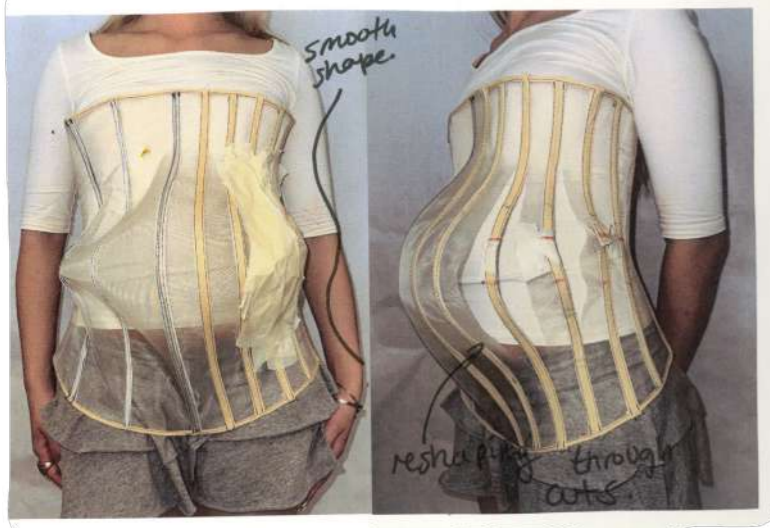


TRAIL!

inside or outside closures?



Finishing for belly corset, inside + outside beige bias + black stitch.



smooth shape

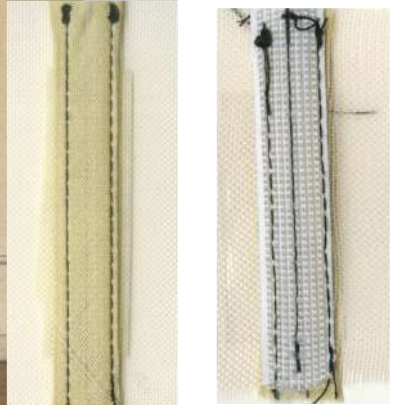
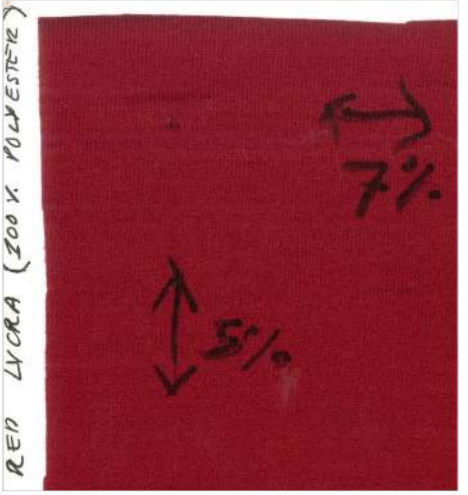
reshaping through cuts

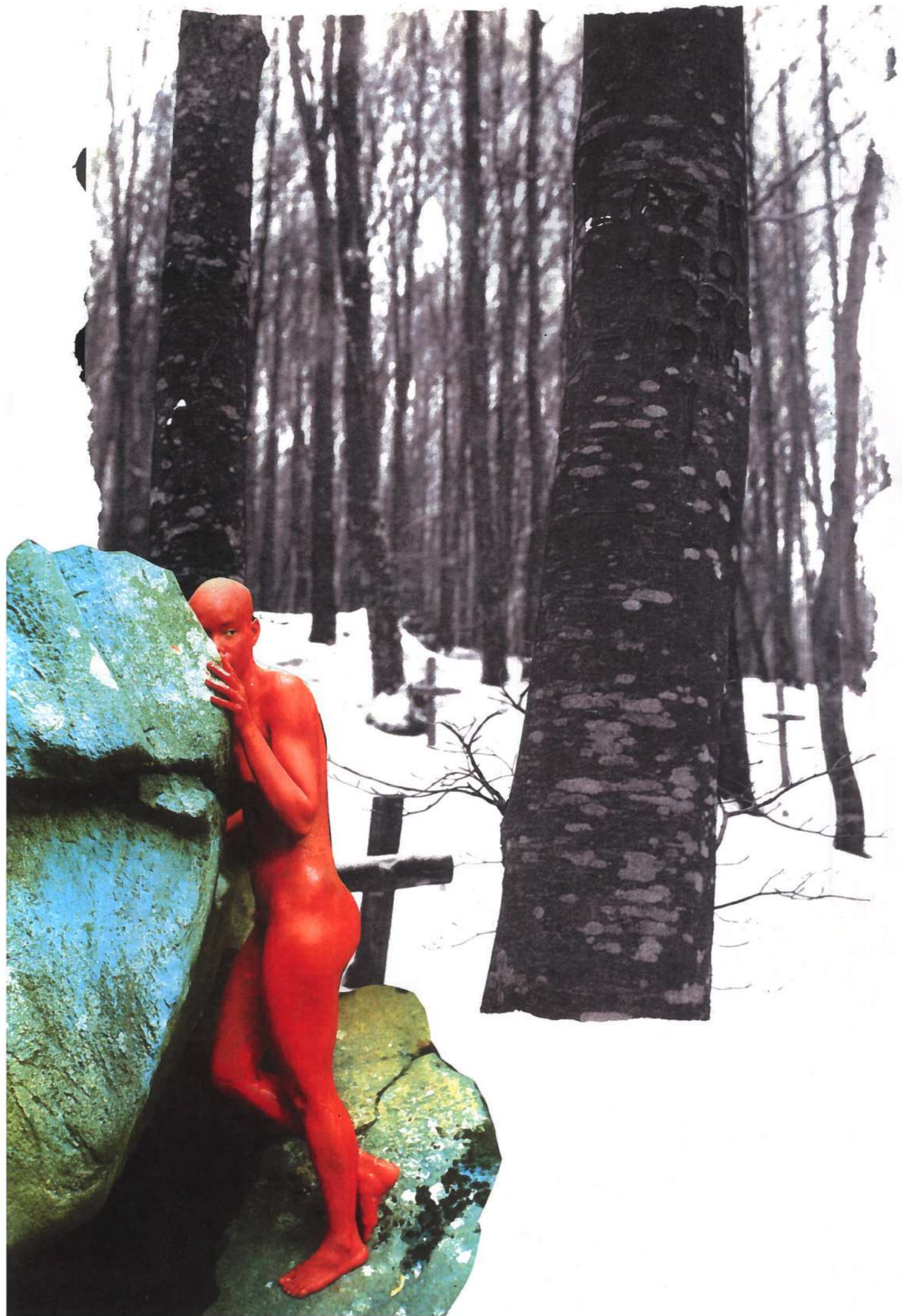


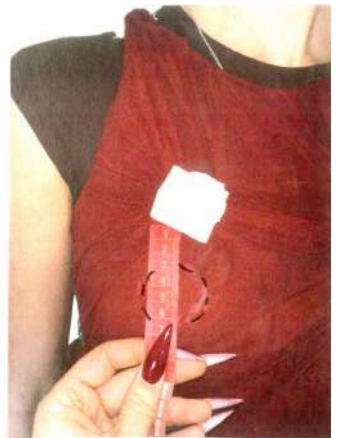
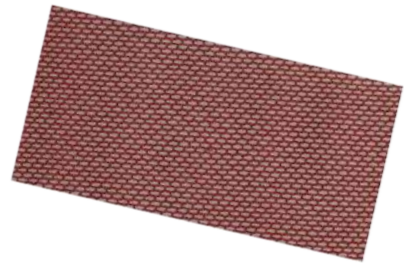
change closures w/ to side



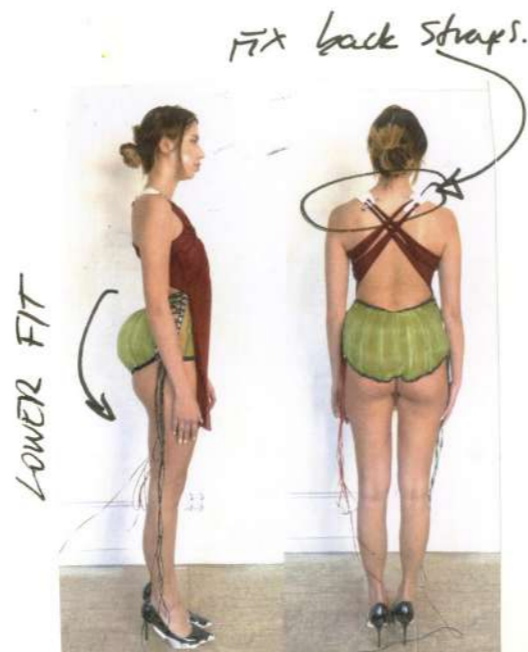
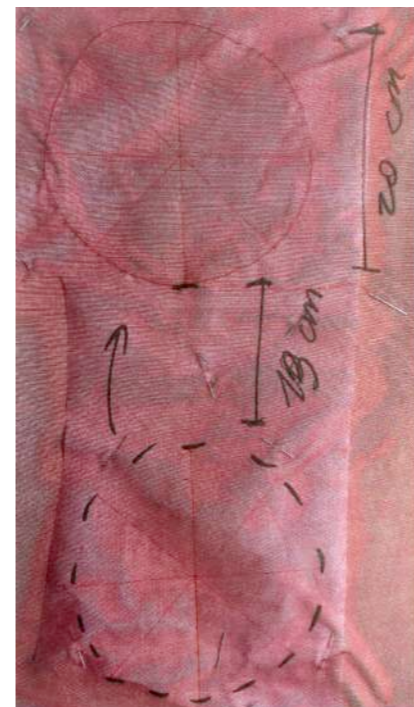
volume too flat engaged (too round)





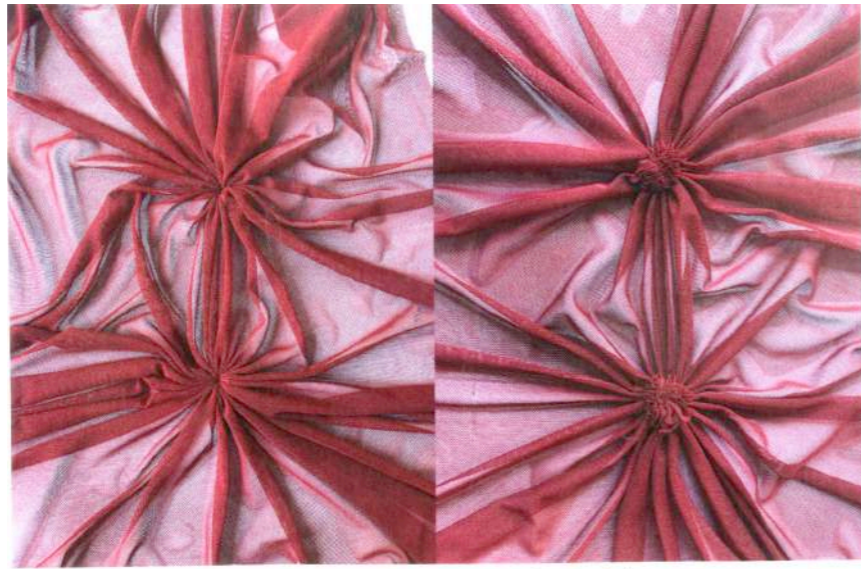


RIGHT NIPPLE
Fix exactly where the nipple falls on the pattern.
LEFT NIPPLE



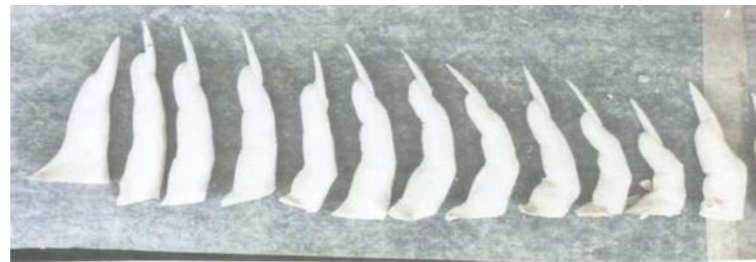


Later pull the thread and make a couple (around 5 loops) around the shape to fix in place



outside view.

inside view.



Selection of fingers for silicon



